

PC Series Stainless Steel Enclosed Base Worktable with Sliding Doors with Adjustable Shelf



FEATURES

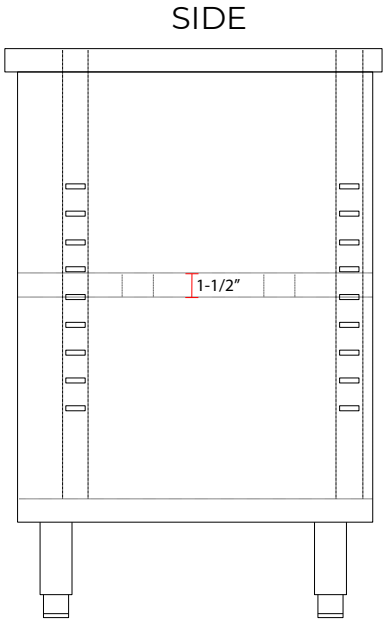
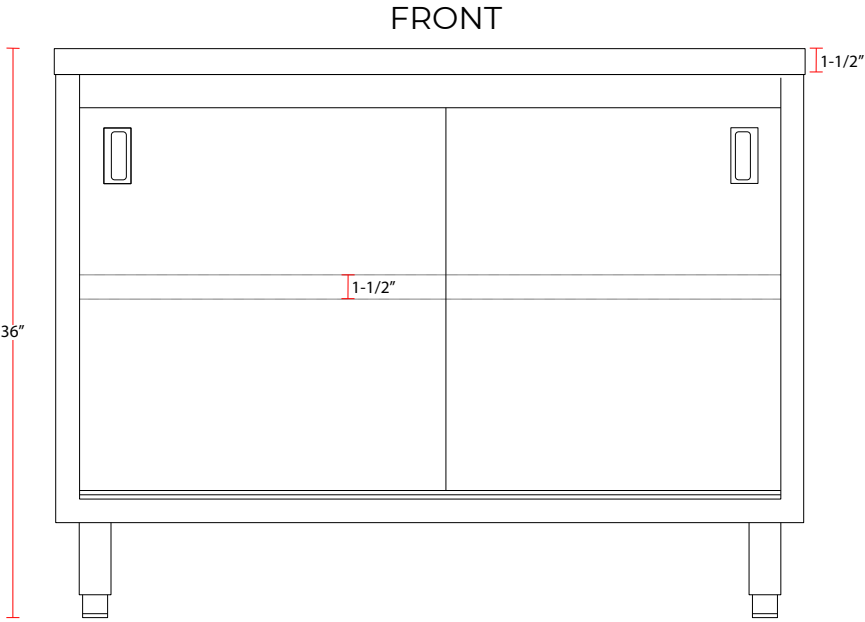
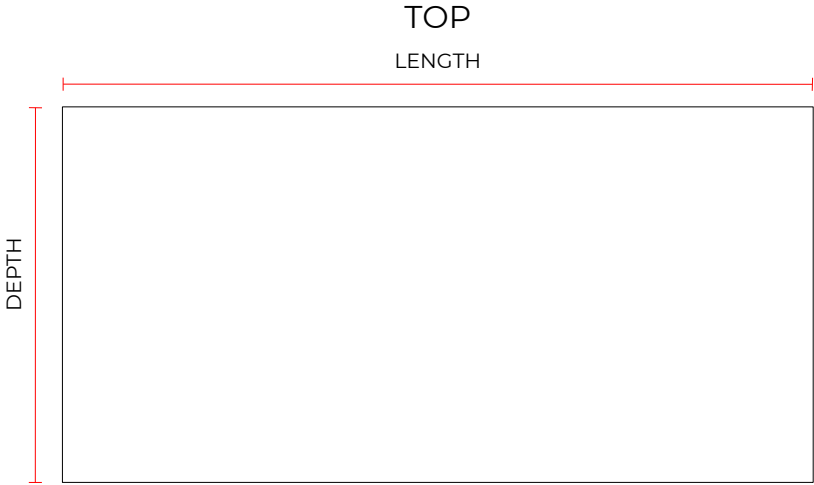
- ▶ Durable 18 gauge type 430 S/S body construction
- ▶ 20 gauge type 430 S/S sliding doors with recessed handle
- ▶ Enclosed style body provides concealed storage
- ▶ Adjustable/removable S/S mid-shelf
- ▶ Large worktop for plenty of working room
- ▶ Anti-corrosion
- ▶ Waterproof
- ▶ Easy to clean
- ▶ All edges finished to provide safety burr free
- ▶ Easy to assemble
- ▶ NSF certified

TECHNICAL DATA

Model	Dimensions	Midshelf Dimensions	Midshelf Capacity	Top Capacity	Undershelf Capacity	Weight
PC-2436	36"L x 24"D x 36"H	19.8"D x 34.5"L	240 lb.	575 lb.	380 lb.	127 lb.
PC-2448	48"L x 24"D x 36"H	19.8"D x 46.5"L	250 lb.	625 lb.	400 lb.	156 lb.
PC-2460	60"L x 24"D x 36"H	19.8"D x 58.5"L	260 lb.	680 lb.	420 lb.	187 lb.
PC-2472	72"L x 24"D x 36"H	19.8"D x 70.6"L	270 lb.	730 lb.	440 lb.	215 lb.
PC-2496	96"L x 24"D x 36"H	19.8"D x 94.5"L	290 lb.	880 lb.	480 lb.	284 lb.
PC-3036	36"L x 30"D x 36"H	25.8"D x 34.9"L	250 lb.	630 lb.	400 lb.	143 lb.
PC-3048	48"L x 30"D x 36"H	25.8"D x 46.5"L	260 lb.	690 lb.	420 lb.	176 lb.
PC-3060	60"L x 30"D x 36"H	25.8"D x 58.5"L	270 lb.	750 lb.	440 lb.	209 lb.
PC-3072	72"L x 30"D x 36"H	25.8"D x 70.6"L	280 lb.	810 lb.	460 lb.	243 lb.
PC-3096	96"L x 30"D x 36"H	25.8"D x 90.6"L	300 lb.	970 lb.	500 lb.	339 lb.

Project:	Quantity:
Model #:	Approval:

For Commercial Use Only



US Restaurant Group is a US supplier of premium quality commercial cooking, refrigeration and food preparation equipment. Our aim is simple. Produce industry-leading commercial restaurant equipment at reasonable prices, and back it all up with an easy to understand, no nonsense warranty that people can count on.