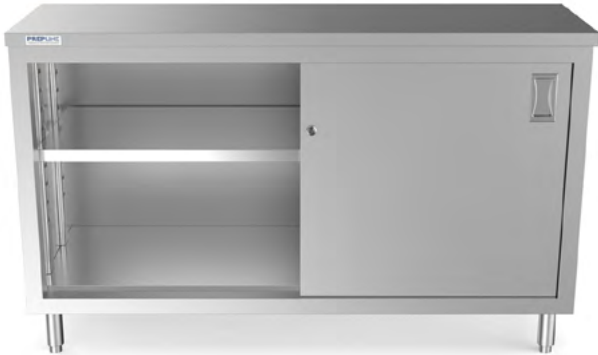


Project:	Quantity:
Model #:	Approval:

For Commercial Use Only

PC-1860 Stainless Steel Enclosed Base Work Table with Sliding Doors and Adjustable Shelf



STANDARD FEATURES

- Fully Enclosed Base Table
- 18"D x 60"L Worktop Area
- Stainless Steel Construction
- Lockable Sliding Doors
- Adjustable and Removable Shelf
- Adjustable S/S Bullet Feet
- **Optional 5" Backsplash**

Bring versatility, durability and convenience to your food prep routines with this Prepline PC-1860 18"D x 60"L stainless steel enclosed base work tables.

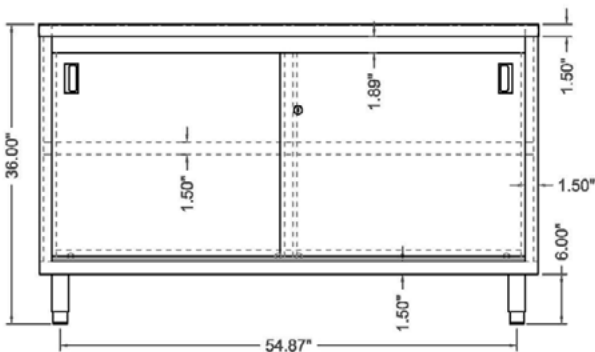
TECHNICAL DATA

Model	Length	Width	Height	Door Style	Number of Doors	Stainless Steel Type	Table Style
PC-1860	60"	18"	36"	Sliding	2	430	Enclosed Base

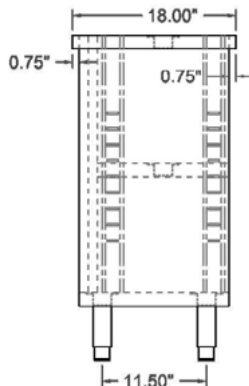
SKU: PC-1860



FRONT



SIDE



TOP

