



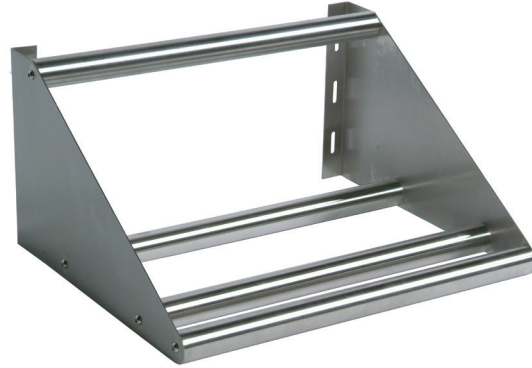
Tubular Dish Shelf

Stainless Steel Shelving



Use your smart phone to scan the above QR code to visit our website:
www.bk-resources.com

Certifications:



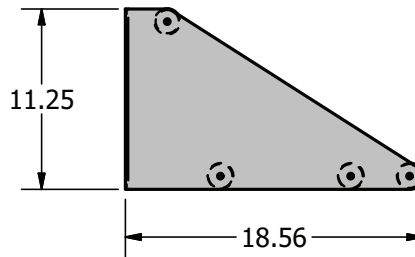
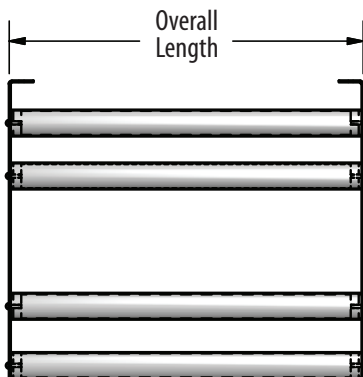
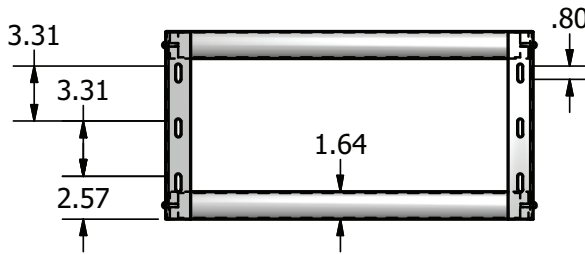
Features:

- 1-5/8" O.D. Stainless Tubing
- Slotted Mounting Holes For Easier Mounting

Material:

- T-304 18 ga. Stainless Steel

Part Number	Length	Unit Size (l x w x h)	Product Weight (lbs)
BK-TSH-22	22"	22" x 18 9/16" x 11 1/4"	13.50
BK-TSH-42	42"	42" x 18 9/16" x 11 1/4"	19.00
BK-TSH-63	63"	63" x 18 9/16" x 11 1/4"	26.50



PRODUCT DATA SHEET

BK RESOURCES

