



# BEVERAGE-AIR

|                 |      |
|-----------------|------|
| Project: _____  | AIA# |
| Item: _____     |      |
| Location: _____ | SIS# |
| Approved: _____ |      |

## OPEN-AIR MERCHANDISER

VMHC-12 Open-Air Merchandiser  
Hydrocarbon Series

MODEL:  
VMHC-12-1-G



**3 Year Parts/Labor Warranty**  
**Additional 4 Year Compressor Warranty**

### CABINET CONSTRUCTION

- Grey powder coated steel exterior
- Interior is painted steel for easy cleaning
- Electronic temperature control
- LowE double-pane glass tempered thermal sides
- Foamed in place CFC free polyurethane insulation enhances the structural strength of the cabinet and helps increase energy efficiency
- Shelves included can be installed in 2 positions for display flexibility
- Price tag molding
- 6" Adjustable legs
- Night curtain comes standard and helps save energy and maintain cabinet temperature.
- Operating temperature 36°F - 40°F
- Intended for use in rooms having ambient condition or 75°F/55% humidity
- LED lighting standard
- Certified for bottled beverages and packaged food product

### OPTIONS & ACCESSORIES

- Front display merchandiser
- Side saddle merchandiser
- WonderBar/peg bar merchandiser
- 3" Casters
- 5" Casters
- Reach-in curtains
- Security cage w/lock

### REFRIGERATION SYSTEM

- R290 refrigerant
- Maintenance free condenser slides out for easy service
- Automatic defrost

VMHC-12 OPEN-AIR MERCHANDISER



Please verify qualifying units by visiting:  
[www.energystar.gov/cfs](http://www.energystar.gov/cfs)

3779 Champion Blvd., Winston-Salem, NC 27105  
1-888-845-9800 Fax: 1-336-245-6453  
Beverage-Air.com Sales@bevair.com

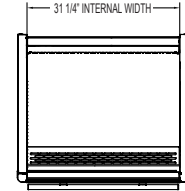


# BEVERAGE-AIR

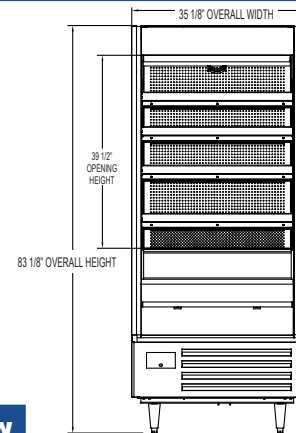
| MODEL                            | VMHC-12-1-G |
|----------------------------------|-------------|
| <b>EXTERNAL DIMENSIONAL DATA</b> |             |
| Width Overall                    | 35 1/8"     |
| Depth Overall                    | 31 3/4"     |
| Height Overall                   | 83 1/8"     |
| <b>INTERNAL DIMENSIONAL DATA</b> |             |
| NET Capacity (cubic ft.)         | 12.15       |
| Internal Width Overall (in)      | 31 1/4"     |
| Internal Depth Overall (in)      | 22"         |
| Internal Height Overall (in)     | 49 1/8"     |
| Number of Shelves                | 5           |
| <b>ELECTRICAL DATA</b>           |             |
| Full Load Amperes 115/60/1       | 12.0        |
| <b>REFRIGERATION DATA</b>        |             |
| Horsepower*                      | (2) 1/4     |
| Capacity (BTU/Hr)*               | 4000        |
| <b>WEIGHT DATA</b>               |             |
| Gross Weight                     | 520 lbs     |
| Height - Crated                  | 82 3/4"     |
| Width - Crated                   | 39"         |
| Depth - Crated                   | 36 1/4"     |

## Open-Air Merchandiser Refrigerator Model: VMHC-12-1-G

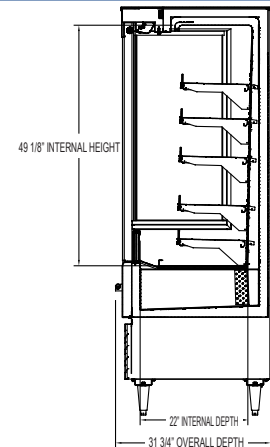
### Model Views



### PLAN VIEW



### ELEVATION VIEW



### SIDE VIEW



### \*ELECTRICAL CONNECTION



115/60/1  
NEMA 5-20P

Units pre-wired at factory and include 8' long cord and plug set.