



BEVERAGE-AIR

Project: _____	AIA#
Item: _____	
Location: _____	SIS#
Approved: _____	

HORIZONTAL BOTTLE COOLERS

DW94HC Deep Well Series
Hydrocarbon Series

MODEL:
DW94HC-B-29



DW94HC Deep Well Series: Horizontal Bottle Coolers



3 Year Parts/Labor Warranty
Additional 4 Year Compressor Warranty

CABINET CONSTRUCTION

- Exterior construction includes wear-resistant vinyl on steel in black finish
- Galvanized steel interior and floor
- Full electronic control
- Tops include easy glide, stainless steel lids and stainless steel countertop
- Countertop with integral glass stops
- Three (3) epoxy coated adjustable wire dividers
- Bottle opener and cap catcher standard
- Constructed with high cooling RPM fans to provide fast cooling

OPTIONS & ACCESSORIES

- Stainless steel exterior
- Stainless steel interior
- Wire divider
- Lid locks
- 3" Casters or 6" adjustable leg with plate
- Remote option* (see note on back on page)

REFRIGERATION SYSTEM

- Refrigeration system uses R290 refrigerant to comply with all environmental concerns
- Automatic, non-electric defrost
- Epoxy coated evaporator coil
- Forced air refrigeration system holds product between 30° - 32°F




Please verify qualifying units by visiting:
www.energystar.gov/cfs

3779 Champion Blvd., Winston-Salem, NC 27105
1-888-845-9800 Fax: 1-336-245-6453
Beverage-Air.com Sales@bevair.com



BEVERAGE-AIR

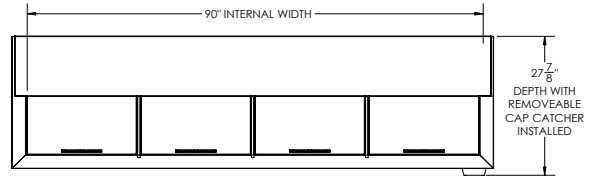


Horizontal Bottle Coolers - Deep Well Model: DW94HC-B-29

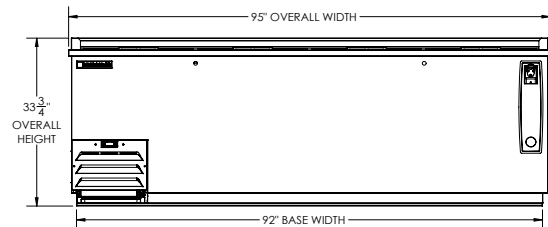
MODEL DW94HC-B-29	
EXTERNAL DIMENSIONAL DATA	
Width Overall	95"
Depth Overall	26 ⁵ / ₈ "
Depth Overall with Cap Catcher	27 ⁷ / ₈ "
Height Overall	33 ³ / ₄ "
Number of Lids	4
INTERNAL DIMENSIONAL DATA	
NET Capacity (cubic ft.)	28.63
Internal Width Overall (in)	90
Internal Depth Overall (in)	22 ³ / ₄ "
Internal Height Overall at Step (in)	16 ³ / ₄ "
Internal Height Overall (in)	26 ³ / ₄ "
Number of Dividers	6
12 oz. Bottle Capacity	39 Cases
12 oz. Can Capacity	55 ³ / ₄ Cases
ELECTRICAL DATA	
Full Load Amperes	2.5
REFRIGERATION DATA	
Horsepower	1/4
Capacity (BTU/Hr)	1702
SHIPPING DATA	
Gross Weight - Crated	468 lbs
Height - Crated	41"
Width - Crated	98"
Depth - Crated	29"

*NOTE: Remote units are field wired and come with 6" legs.
Refrigerant must be specified at time of order.

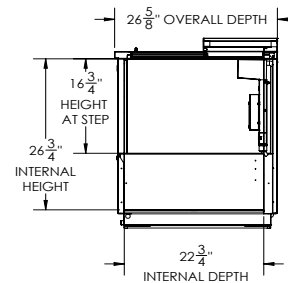
Model Views



PLAN VIEW



ELEVATION VIEW



SIDE VIEW



*ELECTRICAL CONNECTION



115/60/1
NEMA 5-15P

Units pre-wired at factory
and include 8' long cord
and plug set.

3779 Champion Blvd., Winston-Salem, NC 27105 1-888-845-9800 Fax: 1-336-245-6453 Beverage-Air.com Sales@bevair.com

an Ali Group Company



The Spirit of Excellence