



# BEVERAGE-AIR

Project: _____	AIA#
Item: _____	
Location: _____	SIS#
Approved: _____	

## HORIZONTAL BOTTLE COOLERS

MODEL:  
DW79HC-S

DW79HC Deep Well Series  
Hydrocarbon Series

DW79HC Deep Well Series: Horizontal Bottle Coolers

**3 Year Parts/Labor Warranty**  
**Additional 4 Year Compressor Warranty**



### CABINET CONSTRUCTION

- Stainless steel exterior
- Galvanized steel interior and floor
- Full electronic control
- Tops include easy glide, stainless steel lids and stainless steel countertop
- Countertop with integral glass stops
- Three (3) epoxy coated adjustable wire dividers
- Bottle opener and cap catcher standard
- Constructed with high cooling RPM fans to provide fast cooling

### OPTIONS & ACCESSORIES

- Black exterior
- Stainless steel interior
- Wire divider
- Lid locks
- 3" Casters or 6" adjustable leg with plate
- Remote option\* (see note on back on page)

### REFRIGERATION SYSTEM

- Refrigeration system uses R290 refrigerant to comply with all environmental concerns
- Automatic, non-electric defrost
- Epoxy coated evaporator coil
- Forced air refrigeration system holds product between 36°- 40°F



  
ENERGY STAR  
Please verify qualifying units by visiting:  
[www.energystar.gov/cfs](http://www.energystar.gov/cfs)

3779 Champion Blvd., Winston-Salem, NC 27105  
1-888-845-9800 Fax: 1-336-245-6453  
Beverage-Air.com Sales@bevair.com



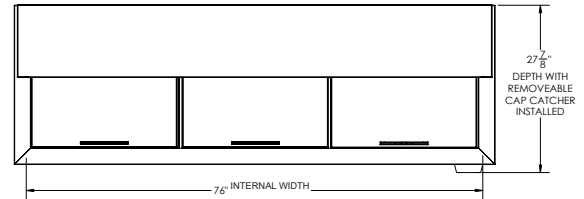
# BEVERAGE-AIR

## Horizontal Bottle Coolers - Deep Well Model: DW79HC-S

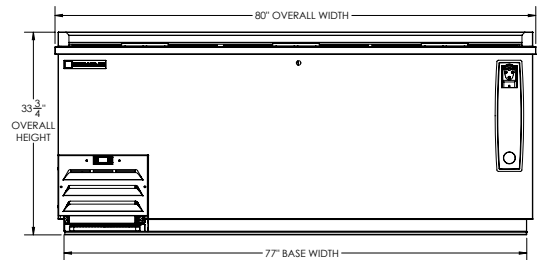
MODEL	DW79HC-S
<b>EXTERNAL DIMENSIONAL DATA</b>	
Width Overall	80"
Depth Overall	26 1/2"
Depth Overall with Cap Catcher	27 7/8"
Height Overall	33 3/4"
Number of Lids	3
<b>INTERNAL DIMENSIONAL DATA</b>	
NET Capacity (cubic ft.)	24.1
Internal Width Overall (in)	76"
Internal Depth Overall (in)	22 3/4"
Internal Height Overall at Step (in)	15 5/8"
Internal Height Overall (in)	26 3/4"
Number of Dividers	5
12 oz. Bottle Capacity	32 Cases
12 oz. Can Capacity	45 3/4 Cases
<b>ELECTRICAL DATA</b>	
Full Load Amperes	2.5
<b>REFRIGERATION DATA</b>	
Horsepower	1/4
Capacity (BTU/Hr)	1702
<b>SHIPPING DATA</b>	
Gross Weight - Crated	432 lbs
Height - Crated	38"
Width - Crated	83"
Depth - Crated	30"

\*NOTE: Remote units are field wired and come with 6" legs.  
Refrigerant must be specified at time of order.

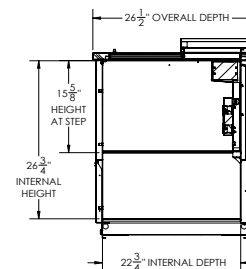
### Model Views



### PLAN VIEW



### ELEVATION VIEW



### SIDE VIEW

### \*ELECTRICAL CONNECTION



115/60/1  
NEMA 5-15P

Units pre-wired at factory  
and include 8' long cord  
and plug set.



3779 Champion Blvd., Winston-Salem, NC 27105 1-888-845-9800 Fax: 1-336-245-6453 Beverage-Air.com Sales@bevoir.com

an Ali Group Company



The Spirit of Excellence