



BEVERAGE-AIR

Project: _____

AIA#

Item: _____

Location: _____

SIS#

Approved: _____

BAR EQUIPMENT - BACK BAR REFRIGERATOR

BB72HC Sliding Glass Door Food Rated Pass-Thru
Hydrocarbon Series

MODEL:

BB72HC-1-GS-F-PT-B

BB72HC-1-GS-F-PT-S



BB72HC-1-GS-F-PT-B
(Stainless steel shown)

3 Year Parts/Labor Warranty
Additional 4 Year Compressor Warranty

CABINET CONSTRUCTION

- Black or stainless steel exterior
- Stainless steel interior
- Heavy duty stainless steel floor
- Full electronic control
- Galvanized sub-top standard
- Two (2) epoxy coated shelves per section, standard
- Self-closing sliding glass doors have black frame regardless of finish
- Stay-open feature
- LED lighting
- Certified for open food product
- Balanced, forced air refrigeration system provides rapid chilling of product
- Maintains product temperature between 36°F and 38°F

OPTIONS & ACCESSORIES

- 2" Stainless steel top
- Wine model (40°-60° models)
- Wine shelf divider
- Additional shelves
- Additional shelf clips
- 3" or 6" casters
- 6" Black legs
- Remote option* (see note on back page)

REFRIGERATION SYSTEM

- Uses environmentally friendly, energy efficient R290 refrigerant, and meets all regulatory requirements for CARB, SNAP, DOE & more
- Automatic, non-electric defrost
- Epoxy coated evaporator coil

BB72HC BACK BAR REFRIGERATORS: PASS-THRU SERIES



3779 Champion Blvd., Winston-Salem, NC 27105
1-888-845-9800 Fax: 1-336-245-6453
Beverage-Air.com Sales@bevair.com



BEVERAGE-AIR

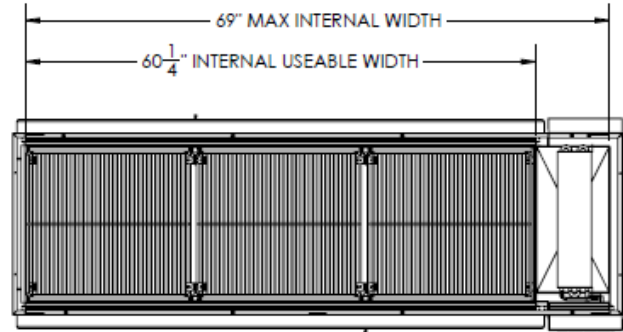
Bar Equipment-Back Bar Refrigerator Sliding Glass Door Pass-Thru

Model: BB72HC-1-GS-F-PT-B, BB72HC-1-GS-F-PT-S

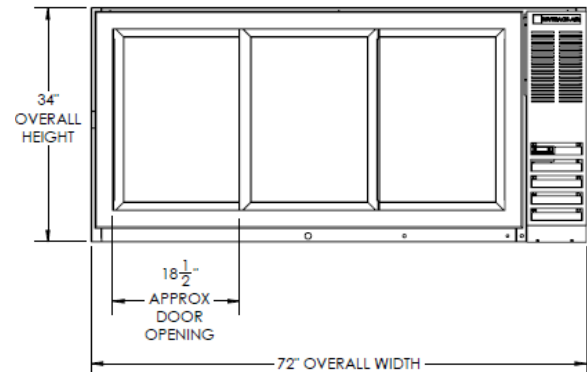
MODEL	BB72HC-1-GS-F-PT-B	BB72HC-1-GS-F-PT-S
EXTERNAL DIMENSIONAL DATA		
Width Overall	72"	72"
Depth Overall	25 3/4"	25 3/4"
Height Overall	34"	34"
Number of Doors	6	6
Door Opening (in)	-	-
INTERNAL DIMENSIONAL DATA		
NET Capacity (cubic ft.)	22.1	22.1
Internal Width Overall (in)	60 1/4"	60 1/4"
Internal Depth Overall (in)	18"	18"
Internal Height Overall (in)	28"	28"
Number of Shelves	6	6
Number of Kegs	3	3
ELECTRICAL DATA		
Full Load Amperes* 115/60/1	3.1	3.1
REFRIGERATION DATA		
Horsepower*	1/3	1/3
Capacity (BTU/Hr)*	1942	1942
SHIPPING DATA		
Gross Weight - Crated	381 lbs	408 lbs
Height - Crated	43"	43"
Width - Crated	75"	75"
Depth - Crated	27"	27"

*NOTE: Remote units are field wired and come with 6" legs. Refrigerant must be specified at time of order.

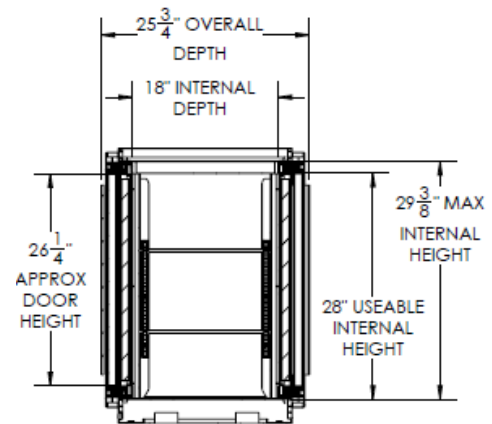
Model Views



Plan View



Elevation View



Side View

ELECTRICAL CONNECTION



115/60/1
NEMA-5-15P

Unit pre-wired at factory and include 8' long cord and plug set.



3779 Champion Blvd., Winston Salem, NC 27105 1-888-845-9800 Fax: 1-336-245-6453 Beverage-Air.com sales@bevir.com

an Ali Group Company



The Spirit of Excellence