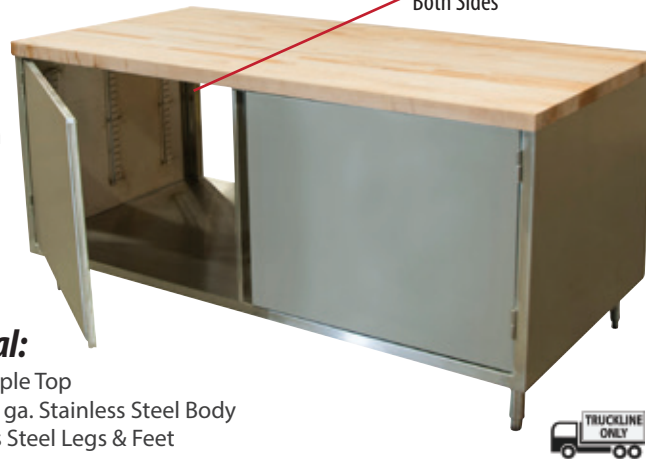




Chef Tables - Hard Maple Top

Stainless Steel Cabinet Base Tables with Hinged Doors

Doors on Both Sides



CMT-3060HL2
Dual Sided Unit Shown

Certifications:



Features:

- 1 ^{5/8}" x 6" Straight S/S Leg
- Hinged Doors with or without Lock
- Single or Dual Sided (Doors on Both Sides)
- 96" Units have a Center Mullion with Two Sets of 48" Doors Per Side
- Legs Adjust 1" in Height
- Casters Available

Material:

- Hard Maple Top
- T-304 18 ga. Stainless Steel Body
- Stainless Steel Legs & Feet

Options:

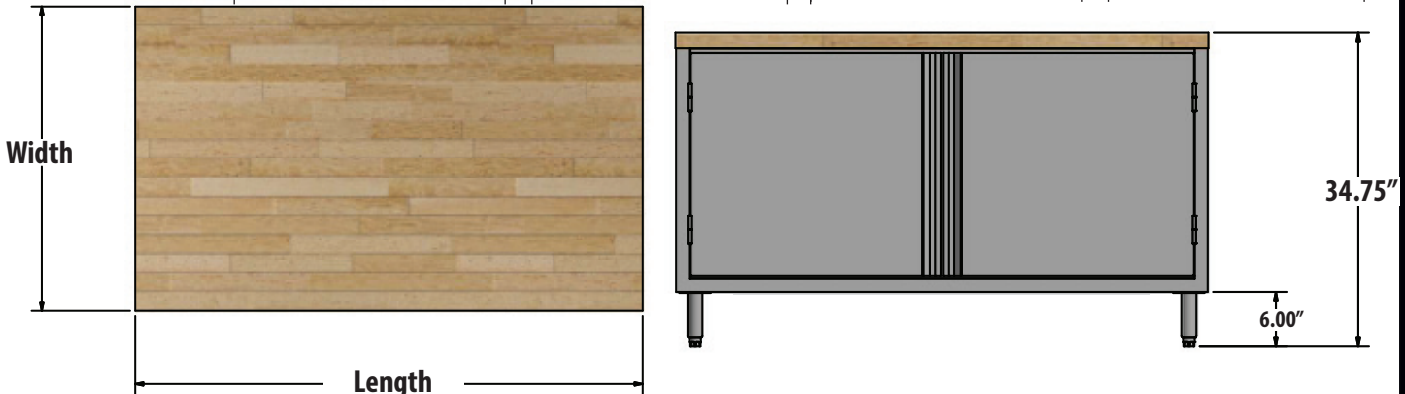
- Adjustable Shelf

Single Sided:

Length	Hinged Door		Hinged Door + Lock	
	24" Width	30" Width	24" Width	30" Width
18"	CMT-2418H	CMT-3018H	CMT-2418HL	CMT-3018HL
24"	CMT-2424H	-	CMT-2424HL	-
30"	-	CMT-3030H	-	CMT-3030HL
36"	CMT-2436H	CMT-3036H	CMT-2436HL	CMT-3036HL
48"	CMT-2448H	CMT-3048H	CMT-2448HL	CMT-3048HL
60"	CMT-2460H	CMT-3060H	CMT-2460HL	CMT-3060HL
72"	CMT-2472H	CMT-3072H	CMT-2472HL	CMT-3072HL
96"	-	CMT-3096H*	-	CMT-3096HL*

Dual-Access:

Length	Hinged Door		Hinged Door + Lock	
	24" Width	30" Width	24" Width	30" Width
18"	CMT-2418H2	CMT-3018H2	CMT-2418HL2	CMT-3018HL2
24"	CMT-2424H2	-	CMT-2424HL2	-
30"	-	CMT-3030H2	-	CMT-3030HL2
36"	CMT-2436H2	CMT-3036H2	CMT-2436HL2	CMT-3036HL2
48"	CMT-2448H2	CMT-3048H2	CMT-2448HL2	CMT-3048HL2
60"	CMT-2460H2	CMT-3060H2	CMT-2460HL2	CMT-3060HL2
72"	CMT-2472H2	CMT-3072H2	CMT-2472HL2	CMT-3072HL2
96"	-	CMT-3096H2*	-	CMT-3096HL2*



PRODUCT DATA SHEET

BK RESOURCES

