



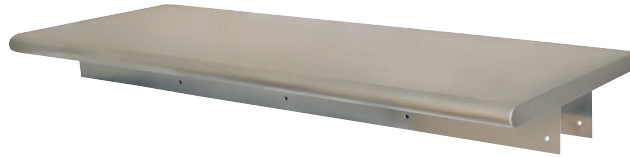
RESOURCES

# Pass Through Shelves

## Stainless Steel Shelving



Use your smart phone to scan the above QR code to visit our website:  
[www.bk-resources.com](http://www.bk-resources.com)



### Certifications:



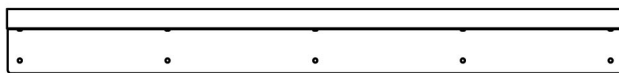
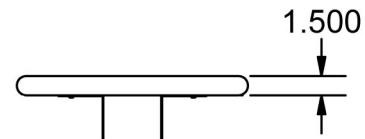
### Features:

- Creates an easy access from kitchen to server area
- Ready to install with wall mounting brackets and hardware

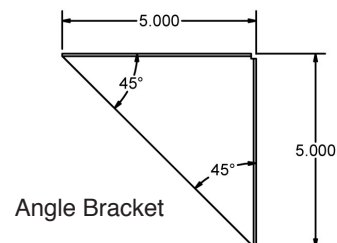
### Material:

- T-304 16 ga. Stainless Steel Top

Part Number	Overall Size: (l x w)	Maximum Wall Thickness	Included Brackets	Product Weight (lbs)
PTS-1824	24" X 18"	5"	2 L-Brackets	21.00
PTS-1836	36" X 18"	5"	2 L-Brackets	30.00
PTS-1848	48" x 18"	5"	2 L-Brackets	42.00
PTS-1860	60" x 18"	5"	2 L-Brackets	52.00
PTS-1872	72" x 18"	5"	2 L-Brackets	62.00
PTS-1896	96" x 18"	5"	2 L-Brackets	82.00
PTS-18108	108" x 18	5"	2 L-Brackets	88.00
PTS-18120	120" x 18	5"	2 L-Brackets	98.00
PTS-2424	24" X 24"	8"	4 Angle Brackets	
PTS-2436	36" X 24"	8"	4 Angle Brackets	32.00
PTS-2448	48" x 24"	8"	4 Angle Brackets	43.00
PTS-2460	60" x 24"	8"	4 Angle Brackets	54.00
PTS-2472	72" x 24"	8"	6 Angle Brackets	64.00
PTS-2496	96" x 24"	8"	6 Angle Brackets	80.00
PTS-24108	108" x 24	8"	6 Angle Brackets	92.00
PTS-24120	120" x 24	8"	6 Angle Brackets	102.00



L-Bracket



Angle Bracket

PRODUCT DATA SHEET

RESOURCES

