



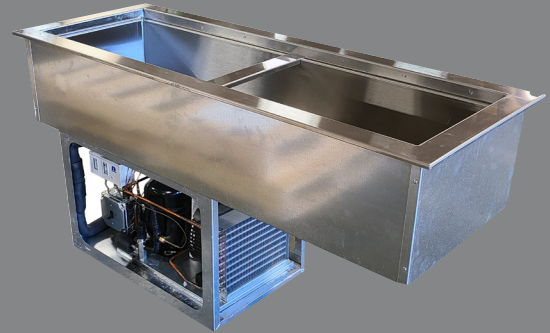
## Refrigerated Cold Pans

### Model

E-SL-CP1-2

E-SL-CP1-3

E-SL-CP1-4



### STANDARD FEATURES

- 1" recessed top edge to comply with NFS-7 requirements
- Self contained drop-in design
- Hold standard 12" by 20" food pans and fractional sized pans
- Meets NSF Standard 7
- Stainless steel top and liner for maximum strength and durability
- 1" drains for ease of cleaning
- On-off switch with 8 ft. cord & plug for ease of installation and operation
- Type 134A or 404A CFC free refrigerant
- Fully insulated, CFC free, foamed-in place insulation keeps food cold while saving energy
- Recessed ledge for pan support and colder, fresher products
- Quick & easy service with sight glass, service valves, filter/dryer and receiver

### DESCRIPTION

Refrigerated Slim Line Drop-In Cold Pans are designed for narrow counters and hold pre-chilled food products at cold, fresh and safe serving temperatures. All models are completely self-contained in two, three or four-well models and are CFC free. Pans are recessed 3" to comply with NSF-7 performance requirements. Includes an 8 ft. 120V cord and plug (120V models).

### SPECIFICATIONS

**Exterior** – One-piece top flange and coved-corner interiors constructed of 18 gauge stainless steel. Exterior body constructed of heavy gauge, corrosion resistant steel. Condensing unit mounted on corrosion resistant frame below the cold pan.

**Interior** – CFC free foamed-in-place insulation through-out, 1" drain located in the center for easy cleaning. Ledge is recessed 3" to comply with NSF-7 requirements, allowing a layer of air to insulate food and for pan support.

**Refrigeration** – Air cooled, type 134A or 404A CFC free refrigerant system featuring wrapped coil construction on both sides and bottom, individual thermostats, on/off switch, 8 ft. cord and plug set NEMA 5-15P (120V models). Refrigeration system features sight glass, easy service valves, dryer/filter and receiver.

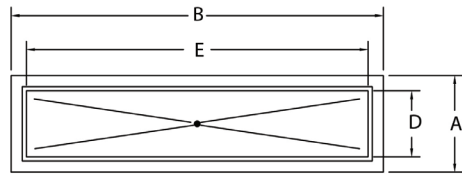
# Refrigerated Cold Pans

□ E-SL-CP1-2

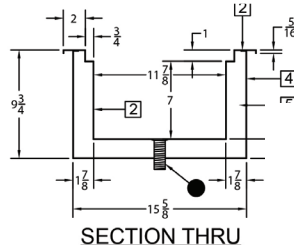
□ E-SL-CP1-3

□ E-SL-CP1-4

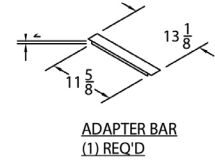
Model E-SL-CP1-4  
shown below



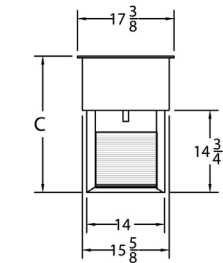
PLAN VIEW



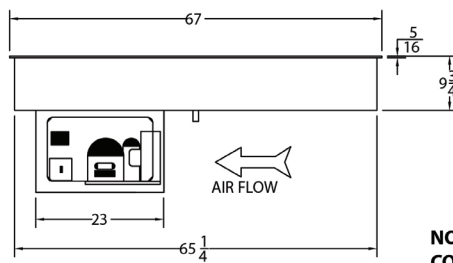
SECTION THRU



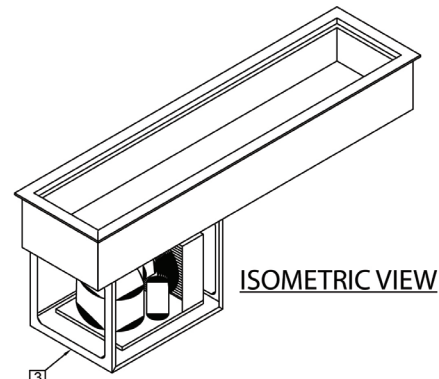
ADAPTER BAR  
(1) REQ'D



SIDE ELEVATION



FRONT ELEVATION  
OPERATOR SIDE



ISOMETRIC VIEW

**NOTE:**  
CONTROL IS LOCATED  
ON OPERATOR SIDE

**Note:** Specifications are subject to change without notice and are not intended for installation purposes. See installation instructions prior to installing the unit.

## SPECIFICATIONS

| Model Number | OVERALL DIMENSIONS                   |                                      | INTERIOR DIMENSIONS           |                                      | CUT OUT DIMENSIONS                   |  |   |
|--------------|--------------------------------------|--------------------------------------|-------------------------------|--------------------------------------|--------------------------------------|--|---|
|              | A<br>Front to Back<br>Inches<br>(MM) | B<br>Left to Right<br>Inches<br>(MM) | C<br>Height<br>Inches<br>(MM) | D<br>Front to Back<br>Inches<br>(MM) | E<br>Left to Right<br>Inches<br>(MM) | Width<br>Front to Back<br>Inches<br>(MM) | Length<br>Left to Right<br>Inches<br>(MM) |
| E-SL-CP1-2   | 17-3/8<br>(441)                      | 46-1/4<br>(1175)                     | 24-1/2<br>(622)               | 11-7/8<br>(302)                      | 40-3/4<br>(1035)                     | 15-7/8<br>(403)                          | 44-3/4<br>(1137)                          |
| E-SL-CP1-3   | 17-3/8<br>(441)                      | 67<br>(1702)                         | 24-1/2<br>(622)               | 11-7/8<br>(302)                      | 61-1/2<br>(1562)                     | 15-7/8<br>(403)                          | 65-1/2<br>(1664)                          |
| E-SL-CP1-4   | 17-3/8<br>(441)                      | 87-3/4<br>(2229)                     | 24-1/2<br>(622)               | 11-7/8<br>(302)                      | 82-1/4<br>(2089)                     | 15-7/8<br>(403)                          | 86-1/4<br>(2191)                          |

## SHIPPING INFORMATION

| Model Number | WEIGHTS                            |                                    | CARTON DIMENSTIONS      |                         |                          | CRATE SIZE |              |
|--------------|------------------------------------|------------------------------------|-------------------------|-------------------------|--------------------------|------------|--------------|
|              | SHIPPING WEIGHTS<br>POUNDS<br>(KG) | SHIPPING WEIGHTS<br>POUNDS<br>(KG) | WIDTH<br>INCHES<br>(MM) | DEPTH<br>INCHES<br>(MM) | HEIGHT<br>INCHES<br>(MM) | CUBIC FEET | CUBIC METERS |
| E-SL-CP1-2   | 182<br>(83)                        | 176<br>(80)                        | 27<br>(686)             | 32<br>(813)             | 32<br>(813)              | 16.0       | 0.45         |
| E-SL-CP1-3   | 194<br>(88)                        | 187<br>(85)                        | 27<br>(686)             | 46<br>(1168)            | 32<br>(813)              | 23.0       | 0.65         |
| E-SL-CP1-4   | 258<br>(117)                       | 250<br>(113)                       | 27<br>(686)             | 60<br>(1524)            | 32<br>(813)              | 30.0       | 0.85         |

## POWER SUPPLY

| Model Number | VOLTS | HP  | AMPS | PHASE  | POWER SUPPLY | REFRIGERANT |
|--------------|-------|-----|------|--------|--------------|-------------|
| E-SL-CP1-2   | 115   | 1/4 | 4.9  | SINGLE | NEMA 5-15P   | 134A        |
| E-SL-CP1-3   | 115   | 1/3 | 5.6  | SINGLE | NEMA 5-15P   | 404A        |
| E-SL-CP1-4   | 115   | 1/2 | 6.4  | SINGLE | NEMA 5-15P   | 404A        |